

Literacy

Focus Texts:



Tin Forest - Helen Ward
The Diversity of Life of Earth - Nicola Davies
Into the Forest- Anthony Browne

Wider texts

Tidy - Emily Garvett
Wind in the Willows
Woodland Explorer's Club - Ewa Jozekowicz
A First Book of Nature - Nicola Davies
Where the Forest Meets the Sea - Jeannie Baker

Phonics

The children will follow the Little Wandle scheme of learning. Year 1 will be revising their Phase 3 and 4 sounds, before moving onto Phase 5. Year 2 will follow the Little Wandle spelling scheme.



History -

Learn about the history of our school
Learn about the history of The National Forest
Learn about the conservation of Rosliston

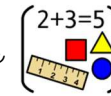


Geography-

Use simple fieldwork to study the geography of the school
Map human and physical features of the school and the local area.
Use locational and directional features to explore the Rosliston Forestry Centre.
Describe and use maps

Maths

Our maths learning will follow the White Rose scheme.



Year 1:

- Place Value (within 20)
- Addition and subtraction (within 20)
- Place Value (within 50)
- Length and Height
- Mass and Volume

Year 2:

- Money
- Multiplication and division
- Length and height
- Mass, capacity and temperature

Spring 2: Enchanted Woodlands



Locality

Enrichment activities

Trip to Rosliston Forestry Centre- Heart of the National Forest

DT

Design a moving storybook inspired by the Tin Forest.
Create levers/slides which enable movement.
Create mechanisms which control movement.
Evaluate the success through testing with a younger audience.

PE

Invasion games

Science

Plants (Y1)

Identify and name:
Common garden plants
Common wild plants
Trees- deciduous and evergreen
Identify the basic structure of plants and trees
To study the scientific work of Beatrix Potter (mycologist)



Computing:

Grouping Data

Sort and group objects/plants by properties

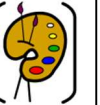


E-Safety:

Online Bullying - I can describe how to behave online in ways that do not upset others and can give examples.

Art

Spring 1 only



Music Travel - Music Express



PSHE - Healthy Me

I can tell you why my body is amazing and
Identify ways



RE

1.6 How and why do we celebrate
Special and sacred times- Christianity
and Hinduism
Following the Derby City Syllabus.

